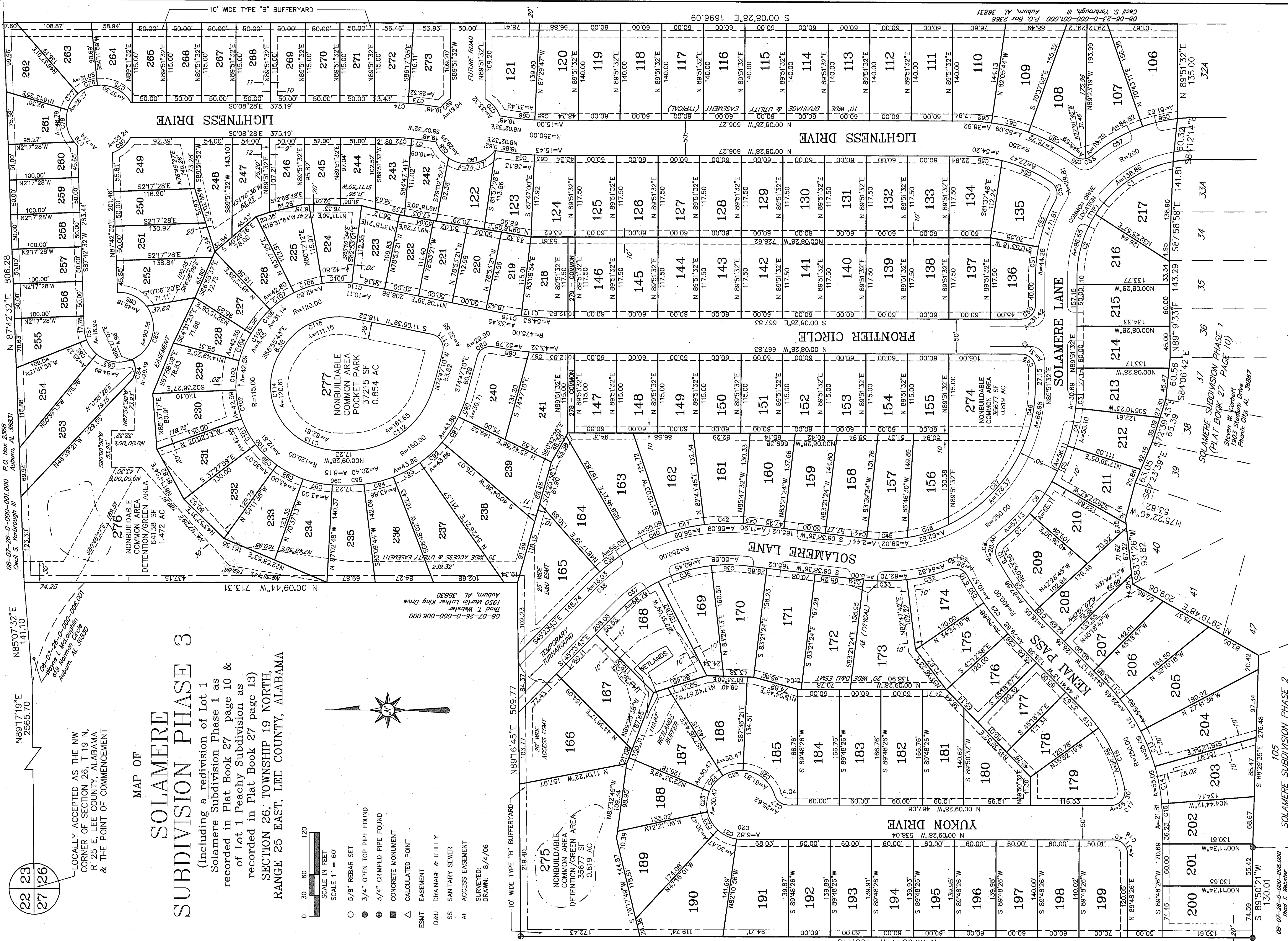


29  
Recorded in the Above  
02-02-2007 10:46:03 AM  
Bill English - Probate Judge  
Lee County, AL

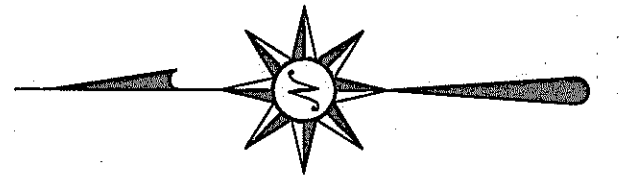


# MAP OF SOLAMERE SUBDIVISION PHASE 3

(Including a revision of Lot 1  
Solamere Subdivision Phase 1 as  
recorded in Plat Book 27 page 10 &  
of Lot 1 Peachy Subdivision as  
recorded in Plat Book 27 page 13)  
SECTION 26, TOWNSHIP 19 NORTH,  
RANGE 25 EAST, LEE COUNTY, ALABAMA

LOCALLY ACCEPTED AS THE NW  
CORNER OF SECTION 26, T 19 N,  
R 25 E, LEE COUNTY, ALABAMA  
& THE POINT OF COMMENCEMENT

- 0 30 60 120  
SCALE IN FEET  
SCALE 1" = 60'
- 5/8" REBAR SET
- 3/4" OPEN TOP PIPE FOUND
- ⊙ 3/4" CRIMPED PIPE FOUND
- CONCRETE MONUMENT
- △ CALCULATED POINT
- ▭ EASEMENT
- D&U DRAINAGE & UTILITY
- SS SANITARY SEWER
- AE ACCESS EASEMENT



SURVEYED:  
DRAWN: 8/4/06

105  
SOLAMERE SUBDIVISION PHASE 2  
(IN DEVELOPMENT)

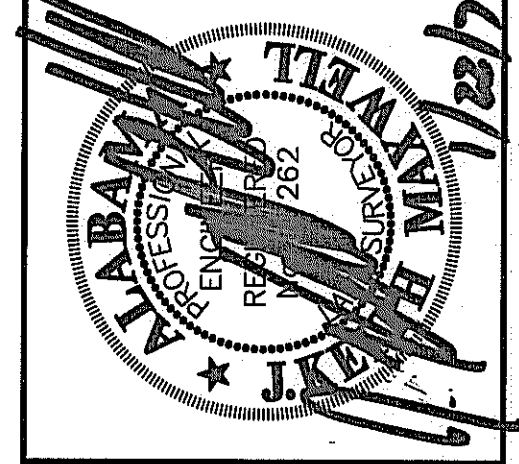
SOLAMERE SUBDIVISION PHASE 1  
(PLAT BOOK 27 PAGE 10)  
Steven W. Corbett  
2003 Stadium Dr.  
Phenix City, AL 36867

SHEET 1 OF 2

**MAXWELL ENGINEERING & LAND SURVEYING, INC.**  
1719 Catherine Court  
P.O. Box 230 Auburn, AL 36831-0230  
Phone (334) 826-9540 (FAX 826-3344)

J. Keith Maxwell  
PEALS No. 17262  
CA-6397-JS  
CA-1367-E

Date: 8/4/06  
Scale: 1"=60'  
Drawn By: DJH  
File Name: 051519L1.dwg  
Sheet Title: SOLAMERE SUBDIVISION PHASE 3



08-07-26-0-000-006.000  
Thad T. Webster  
1950 Martin Luther King Drive  
Auburn, AL 36830